

# DESKTOP model

Maths and Science Support Programme



## *DEVELOPED AND IMPLEMENTED BY*

Govan Mbeki Mathematics Development Unit (GMMDU)  
and the FRF Chair in Maths Education at the Nelson  
Mandela Metropolitan University



**FIRSTRAND**



**Govan Mbeki Mathematics  
Development Unit**

*empowering young minds*



**Nelson Mandela  
Metropolitan  
University**

*for tomorrow*

## *DESKTOP MODEL*

The TouchTutor™ Maths and Science package is installed on desktop computers and is a user-friendly and flexible platform for Maths and Science learner scaffolding support.

Learner workbooks that are aligned with the Maths and Science content video lessons of the TouchTutor™ package is available to complement the desktop computer-based student support model.



## *WHAT IS THE TOUCHTUTOR™ PACKAGE?*

- Grades 10, 11 & 12 CAPS aligned NCS Mathematics content video series
- Grades 11 & 12 NCS Physical Science Content video series
- Grades 11 & 12 NCS Physics & Chemistry experiment videos and discussions (66 in total)
- Past national NCS mathematics exam videos- 2008-20012 - papers 1 & 2 questions & solutions
- Casio calculator video series (FX-82ZA Plus) - demonstrates solutions of syllabus aligned mathematical problems using onscreen calculator emulator
- Learner workbooks that are aligned with mathematics video lessons - Grades 10 - 12
- Additional material - Siyavula Everything Maths & Science books for Grades 10 (CAPS), 11 & 12 (NCS) and various other NCS Maths & Science support material.
- TouchTutor™ Maths material also completely covers level 2 of the NCV syllabus as well as 90% of NCV levels 3&4.

## *SCAFFOLDING SUPPORT*

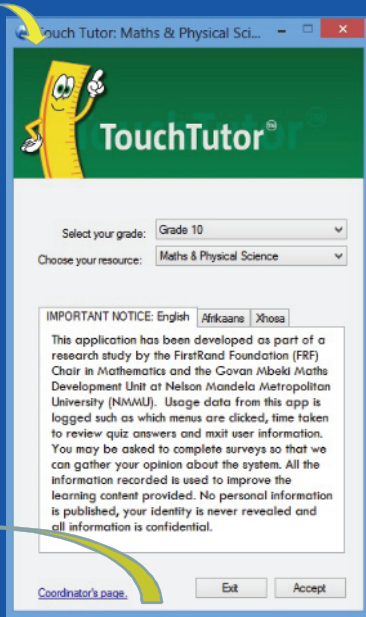
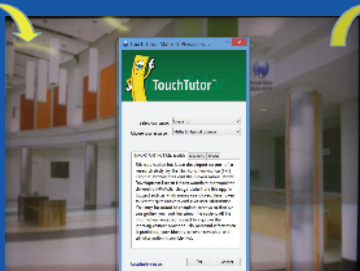
The TouchTutor™ package is fully aligned with the current Maths and Science syllabi and provides a user-friendly and flexible academic scaffolding support platform in schools and FET Colleges . Learner access and interaction with the TouchTutor™ material holds great potential for effective independent learning.

The computers are placed under the care of a responsible mathematics educator and housed in an accessible venue i.e. classroom, laboratory, library or office. A logbook is kept of learner access and usage of each desktop computer.





TouchTutor™  
ICON



ENTER GRADE AND  
CHOOSE MATHS OR  
SCIENCE

MATHS

SCIENCE





Desktop distribution and implementation at schools in  
Cookhouse, Eastern Cape

## *CONTACT US:*

Govan Mbeki Maths Development Unit  
Nelson Mandela Metropolitan University  
CSIR Building  
4 Gomery Ave  
Summerstrand  
Port Elizabeth  
6031

Tel: 041 504 2548 / 041 504 4743

Email: [mjcollett@nmmu.ac.za](mailto:mjcollett@nmmu.ac.za)



**Govan Mbeki Mathematics  
Development Unit**

*empowering young minds*